

CVR-CFP-QSFP28

CFP to QSFP28 converter module

OVERVIEW

The CVR-CFP-QSFP28 provides the ability to use a QSFP28 transceiver in a host having an CFP interface. The CVR-CFP-QSFP28 converts between the bidirectional 10x 10G flows in the CFP and the bidirectional 4x 25G flows in the QSFP28 transceiver.

The converter does not include a RS (Reed-Solomon) FEC encode and decode functionality, so the converter is to be used with QSFP28 transceivers with interfaces that do not require FEC, such as 100GbE ER4/LR4 and OTU4.

TECHNICAL DATA

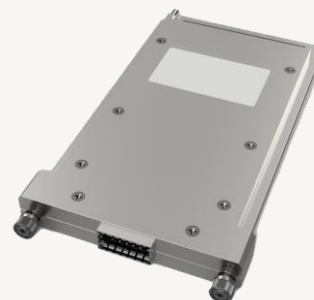
| Parameter | Value |
|-----------------------|-------------------------|
| Technology | Converter CFP to QSFP28 |
| Protocol support | 100G Ethernet, OTU4 |
| Power consumption | < 5.5W |
| Operating temperature | 0°C to +70°C |
| Storage temperature | -40°C to +85°C |

Safety/regulatory compliance:

TUV/UL/FDA (contact Smartoptics for latest certification information)

RoHS compliance

| Parameter | Value |
|----------------|---------------------------|
| DDM | via MDIO 2-Wire Interface |
| MSA compliance | CFP-MSA, QSFP28 MSA |



ORDERING INFORMATION

| Ordering code | Description |
|----------------|--|
| CVR-CFP-QSFP28 | CFP to QSFP28 converter module, 100G Eth, OTU4 |